



## 16 Lisle Road

, South Shields, NE34 6DQ

£249,950



Having South West aspect gardens, we are delighted to offer this superb Semi Detached Bungalow in this much sought after location close for the centre of Harton Village. The home offers the versatile accommodation, currently used as two bedrooms and two reception rooms, comes neutrally styled and has the benefit of gas central heating, double glazing and no onward chain. There are wardrobes to both the bedrooms, a bathroom with shower over the bath, fitted kitchen with appliances and the gardens with patio, lawns, concreted drive to a single garage. Viewing a must to fully appreciate



**Entrance lobby**  
Through to

**Entrance hall**  
Built in cupboard, radiator

**Living room 13'4" x 12'0" (4.08 x 3.68)**  
To the front of the home with a feature fire surround with gas fire, radiator

**Sitting/dining room 13'9" x 12'0" (4.20 x 3.66)**  
To the rear, this versatile room has a wall hung gas fire, alcove cupboard and a radiator

**Kitchen 11'3" x 7'3" (3.43 x 2.21)**  
Fitted with wall, base units and work surfaces housing a sink unit, gas cooker, fridge freezer and washer, tiled splash backs and door to the garden

**Bedroom 1 13'2" x 9'4" (4.03 x 2.85)**  
Fitted wardrobes with mirrored sliding doors, radiator

**Bedroom 2 11'7" x 7'11" (3.54 x 2.43)**  
Fitted wardrobes with mirrored sliding doors, radiator

**Bathroom**  
Bath with electric shower over, vanity unit with wash basin, WC, radiator

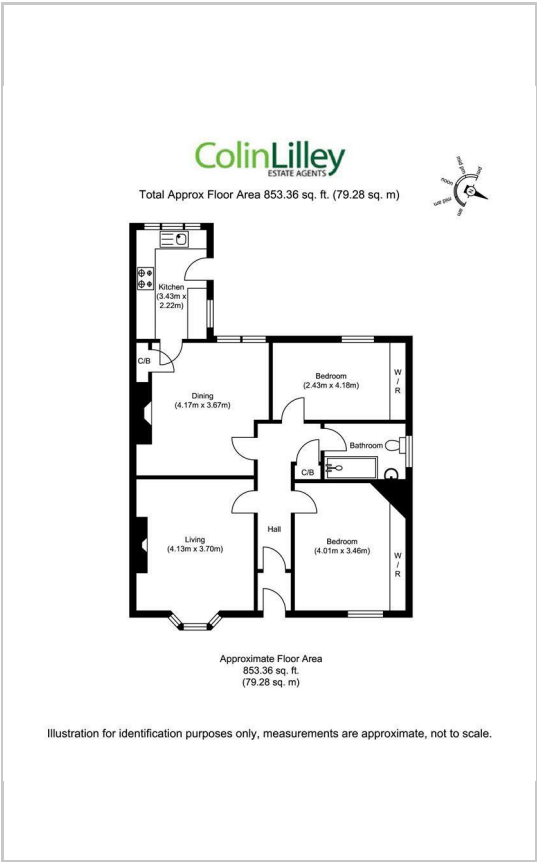
**Garage**  
A single prefab garage with up and over door. Concreted drive for additional off road storage

**External**  
Great South West aspect gardens with large patio area, lawns, vegetable beds, gravel area and garden shed

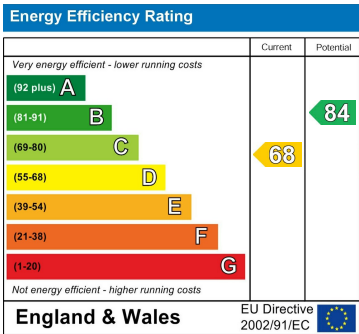
Area Map



Floor Plans



Energy Efficiency Graph



These particulars, whilst believed to be accurate are set out as a general outline only for guidance and do not constitute any part of an offer or contract. Intending purchasers should not rely on them as statements of representation of fact, but must satisfy themselves by inspection or otherwise as to their accuracy. No person in this firms employment has the authority to make or give any representation or warranty in respect of the property.